

2024

ACE

AKRON COMMUNITY  
ENGAGED SCHOLAR

DIRECTORY



THE EX[L]CENTER for Community Engaged Learning

# TABLE OF CONTENTS

**03.**

ACE SCHOLARS  
OVERVIEW

**17.**

EMERGING ACE  
SCHOLARS

**23.**

GET IN TOUCH  
WITH OUR ACES

**04.**

ACE SCHOLARS

**18.**

LIFETIME ACE  
SCHOLAR RECIPIENTS

# WHO ARE THE ACES?

**Akron Community Engaged Scholars** (ACE Scholars or ACES) is a way to formally affiliate with the EX[L] Center for Community Engaged Learning for those full- or part-time faculty who demonstrate a commitment to public impact by connecting campus and community through their teaching, scholarship, and/or significant service. ACES are mindful of best practices, striving to create partnerships based on mutual benefit, reciprocity, authenticity, trust, and equity. They actively support a culture of engagement on campus and contribute to telling UA's community

engagement story by being active users of the Collaboratory data system. ACE Scholars are connected by a shared passion, and convene for professional development, to share best practices, to mentor others, and to innovate in community engagement.



**Lifetime ACE Scholar** is a title reserved for faculty when they move on from UA. Throughout their career, these ACES were instrumental in building and supporting a strong culture of community engagement through their support of The EX[L] Center and with their teaching and scholarship. **Emerging Scholars** are faculty who are early in their journey who are paired with mentors as they develop their work. Together, the ACES represent some of the very best of UA as we work to fulfill our vision as a public research anchor institution with an unsurpassed commitment to community engagement.

ABOUT US

# OUR ACE SCHOLARS



**Dr. Henry Astley**

Assistant Professor  
Department of Biology  
[hastley@uakron.edu](mailto:hastley@uakron.edu)  
*Robotics Education, Biomimicry*



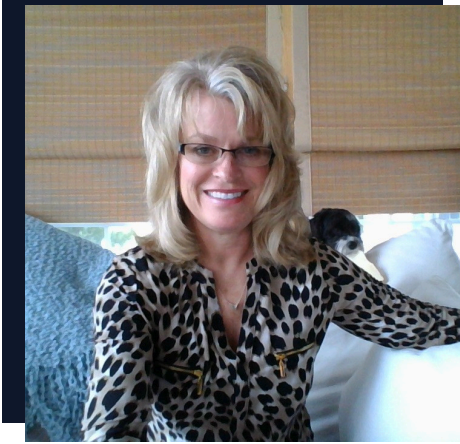
**Dr. Mehmet Baysal**

Assistant Professor of Practice  
Department of  
Mechanical Engineering  
[mmbaysal@uakron.edu](mailto:mmbaysal@uakron.edu)  
*Manufacturing Training, Hands-on Learning, Workforce Development*



**Dr. Jennifer L. Bazar**

Assistant Director  
Cummings Center for the  
History of Psychology  
[jbazar@uakron.edu](mailto:jbazar@uakron.edu)  
*Museum, Archive, History of Psychology, History of Mental Health Care*



**Marcia Belcher-Christine, PE**

Professor & Program Director  
Civil Engineering  
[mcbelcher@uakron.edu](mailto:mcbelcher@uakron.edu)  
*Sustainability, Biomimicry, Adult Education, Workforce Development, Apprenticeship Training*



**Donray Bennett, M. Ed**

Director, Strategic  
Engagement & Recruitment  
BCAS - Office of the Dean  
[dbennett@uakron.edu](mailto:dbennett@uakron.edu)  
*College Access, Financial Literacy, Health Equity, College Readiness, Wholistic Services*



**Dr. Jennifer Bozeka**

Senior Lecturer  
LBJFF School of Education  
[jb3@uakron.edu](mailto:jb3@uakron.edu)  
*Education, 21st Century Skills, Social-Emotional Learning, Informed Citizens, Diversity, Equity*





**Jordan Brlan**

Associate Director -  
Retention & Recruitment  
School of Engineering &  
Polymer Science Dean's Office  
[jbrlan@uakron.edu](mailto:jbrlan@uakron.edu)  
Education, Academics, STEM,  
Outreach, Readiness



**Theron Brown**

Assistant Professor of Practice  
School of Music - Jazz Studies  
[teb10@uakron.edu](mailto:teb10@uakron.edu)  
Arts, Youth Arts, History,  
Art Economics



**Dr. Aimee Budnik**

RDN, LD, Assistant Lecturer  
Exercise & Nutrition Science  
[abudnik@uakron.edu](mailto:abudnik@uakron.edu)  
Health Equity, Quality Improvement,  
Co-design, Program Implementation,  
Public Health, Community Nutrition,  
Assessment, Evaluation



**Julie Cajigas**

Professor of Practice,  
Advisor, *The Buchtelite*, &  
PRSSA Chapter  
School of Communication  
[julieca@uakron.edu](mailto:julieca@uakron.edu)  
Social Media, Assessment, Public  
Relations, Marketing, Special Events,  
Copywriting



**Dr. Kevin Cavicchi**

Professor  
School of Polymer Science  
& Polymer Engineering  
[kac58@uakron.edu](mailto:kac58@uakron.edu)  
STEM Education, Outreach



**Dr. Devon Carter**

Assistant Professor of Practice  
LBJFF School of Education  
[dacarter1@uakron.edu](mailto:dacarter1@uakron.edu)  
Urban Education, Social Emotional  
Learning, Cultural Responsiveness

# OUR ACE SCHOLARS



**Dr. Sydney**

**Chinchana Chokchai**

Associate Professor

Department of Marketing

[schinchana@uakron.edu](mailto:schinchana@uakron.edu)

*Marketing, Social Media Marketing, Digital Marketing, Advertising, Communications*



**Dr. David Cohen**

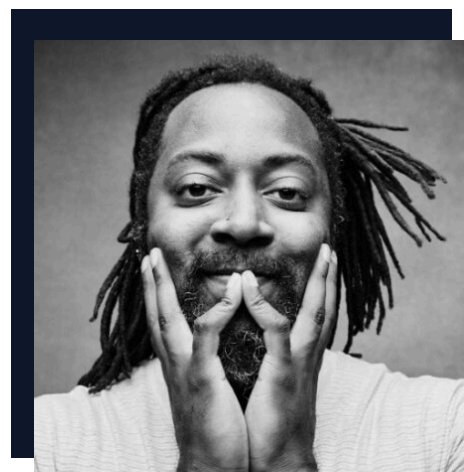
Director - Applied Politics Program

Professor - Department of

Political Science

[dbcohen@uakron.edu](mailto:dbcohen@uakron.edu)

*Civic Engagement, Political Efficacy, Community, Media Outreach*



**Christopher Coles**

Professor of Practice

Music

[cjcoles23@uakron.edu](mailto:cjcoles23@uakron.edu)

*Arts Advocacy, Arts Equity, Sustainable Arts Programs for Youth*



**Juan Eduardo**

**Contreras Barberena**

General Manager - Z-TV

Professor of Practice - School

of Communication

[jec37@uakron.edu](mailto:jec37@uakron.edu)

*Storytelling, Media Production/Literacy, Cultural Diversity, Citizen Diplomacy*



**Andrew C. Costigan**

Assistant Dean

School of Law

[acc142@uakron.edu](mailto:acc142@uakron.edu)

*Servant Leadership, Higher Education, Resilience, Incarceration/Reentry/Recidivism, Emotional Health & Grief*



**Dr. Sandie Crawford**

Director

Office of Inclusion & Equity

[sandiec@uakron.edu](mailto:sandiec@uakron.edu)

*Diversity, Equity, Inclusion, Social Justice*





**Alison Doehring**

Senior Director, ZipAssist &  
Student Affairs Development  
[aer15@uakron.edu](mailto:aer15@uakron.edu)

*Food Insecurity, Basic Needs, Financial  
Literacy, Placemaking, Collaborative  
Projects, Strategic Partnerships*



**Dr. Shanon Donnelly**

Associate Professor  
of Instruction  
Department of Geosciences  
[sd51@uakron.edu](mailto:sd51@uakron.edu)

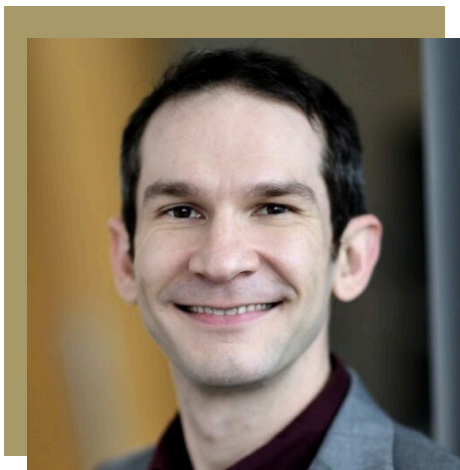
*Mapping, Data Collection, Analysis,  
& Visualization, Geography, Food*



**Melissa Dreisbach**

Visiting Associate Professor  
School of Exercise &  
Nutrition Sciences  
[mdk24@uakron.edu](mailto:mdk24@uakron.edu)

*Health, Physical Activity, Sport,  
STEM, Special Needs, K-12*



**Dr. James M. Eagan**

Assistant Professor  
School of Polymer Science  
& Polymer Engineering  
[eagan@uakron.edu](mailto:eagan@uakron.edu)

*Sustainability, Polymers, Recycling,  
Carbon Utilization, Biodegradable  
Plastics, Green chemistry*



**Dr. Rebecca Erickson**

Professor & Chair  
Department of Sociology  
[rericks@uakron.edu](mailto:rericks@uakron.edu)

*Health, Mental health, Public Safety,  
Workplace Well-being,  
Non-profits, Education*



**Dr. Amber Ferris**

Professor & Interim Chair  
School of Communication  
[aferris@uakron.edu](mailto:aferris@uakron.edu)

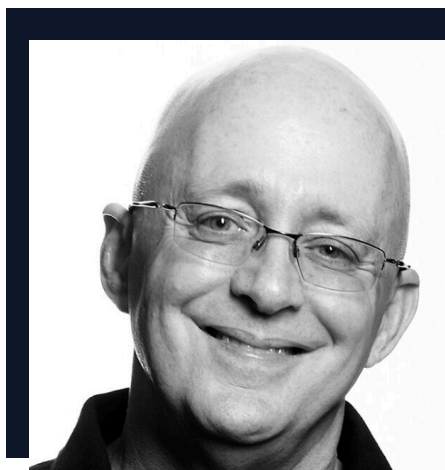
*Media Literacy, Survey  
Research/Assessment, Data  
Visualization, Social Media*

# OUR ACE SCHOLARS



**S. Victor Fleischer,  
M.A., M.L.I.S**

University Archivist & Head  
Archives and Special Collections,  
Professor of Bibliography  
Archives and Special Collections of  
University Libraries  
[svfleis@uakron.edu](mailto:svfleis@uakron.edu)  
Public History, Ohio History, Local  
History, Museums and Archives,  
Information Literacy, Primary Source  
Literacy



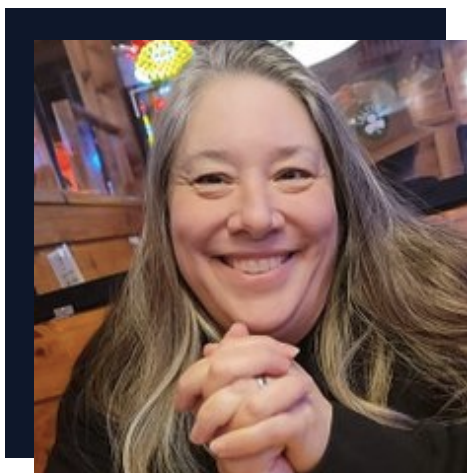
**David R. Flynn**

Professor of Practice  
Graphic Design  
[flynn1@uakron.edu](mailto:flynn1@uakron.edu)  
*Graphic Design, Typography,  
Advertising & Publication Design,  
Branding & Corporate Identity,  
Creative Thinking, Ideation,  
Storytelling, Short Fiction, Poetry*



**Karen Fitzgerald  
MSN, APRN-BC, PMHS**

Professor of Instruction  
School of Nursing  
[fkaren@uakron.edu](mailto:fkaren@uakron.edu)  
*Compassionate Care, Health  
Promotion, Disease Prevention,  
Child Welfare*



**Tannya Forcone**  
Associate Lecturer

Department of Anthropology  
[ts57@uakron.edu](mailto:ts57@uakron.edu)  
*Food Security/Justice, Community-  
Based Participatory Research,  
Intersection of Food,  
Racial Inequalities*



**Dr. Joseph Fox**  
Assistant Professor

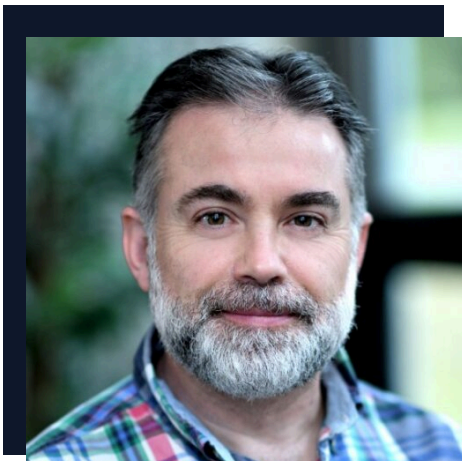
Department of Management  
[jfox1@uakron.edu](mailto:jfox1@uakron.edu)  
*Entrepreneurship, Innovation,  
Angel Investing, Venture Capital,  
Startups*



**Dr. Elisa Gargarella**  
Director - Arts LIFT &  
Art Bomb Brigade  
Associate Professor  
Myers School of Art  
[gelisa@uakron.edu](mailto:gelisa@uakron.edu)

*K-12 Art Education, Creative  
Placemaking, Public Art & Arts  
Programming, Social/Cultural  
Responsive Leadership, Social Justice*





**Tom Hammond, M.A.**

Lab Support Specialist  
Technical Support Services  
[tjh1@uakron.edu](mailto:tjh1@uakron.edu)  
Makerspace, Stem, Steam, 3D  
printing, Maker Faire, Community,  
Digital Fabrication



**Dr. Gary Holliday**

Assistant Director &  
Professor  
LBJFF School of Education  
[gh30@uakron.edu](mailto:gh30@uakron.edu)  
STEM Education, Informal Learning  
Environments, Out-of-School Time,  
Museums, Science Communication



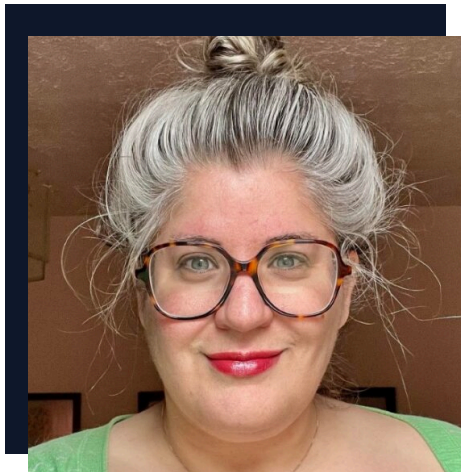
**Drew Ippoliti**

Associate Professor of  
Instruction  
Myers School of Art  
[aippoliti@uakron.edu](mailto:aippoliti@uakron.edu)  
Ceramics, Sculpture, Art,  
Community Building,  
Community Experience,  
Story Telling/Collecting



**Dr. Daniela Jauk-Ajamie,  
C.C.S.**

Assistant Professor  
Department of Criminal  
Justice & Sociology  
[djauk@uakron.edu](mailto:djauk@uakron.edu)  
*Intersections of gender,  
environmental, reproductive and  
criminal justice, clinical sociology*



**Dr. Kara Kvaran**

Associate Professor  
of Instruction  
Women's Studies  
[kkvaran@uakron.edu](mailto:kkvaran@uakron.edu)  
*Women's Rights, Feminism,  
Reproductive Justice, Film,  
Popular Culture, Art*



**Dr. Jodi Kearns**

Associate Research Professor  
of Bibliography  
Director - Institute for  
Human Science & Culture  
[jkearns@uakron.edu](mailto:jkearns@uakron.edu)  
*Libraries, Archives, Museums,  
Hands-On Humanities, Education  
and Information Literacy*

# OUR ACE SCHOLARS



**Jeff Klemm**

Director - Prof. Development  
& Leadership Initiatives  
College of Business Dean's  
Office

[jklemm@uakron.edu](mailto:jklemm@uakron.edu)

*Servant & Relational Leadership,  
Financial Literacy, Food Insecurity,  
Cross-Cultural Awareness, Global  
Competency, Civic Engagement*



**Matthew Kolodziej**

Distinguished Professor of Art  
Myers School of Art  
[mattk@uakron.edu](mailto:mattk@uakron.edu)  
*Arts, Entrepreneurship,  
Interdisciplinary, Environment,  
Communication*



**Dr. Susan Kushner Benson**

Associate Professor  
LBJFF School of Education  
[snk@uakron.edu](mailto:snk@uakron.edu)  
*K-12 Urban Education, Education  
System, Systemic Racism, Poverty  
Systems, Juvenile Justice,  
Health Care*

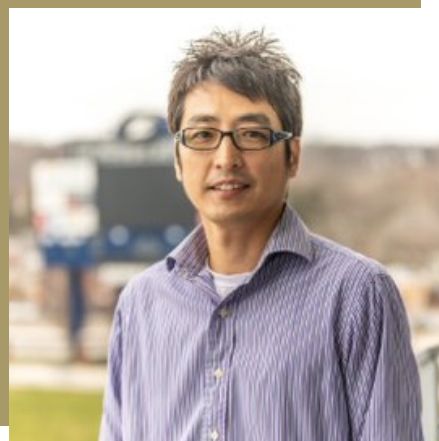


**Brant Lee, J.D.**

Professor - School of Law  
Assistant Dean - Diversity and  
Social Justice Initiatives

[btlee@uakron.edu](mailto:btlee@uakron.edu)

*Racial Equity, Systemic  
Discrimination, Housing Policy,  
Community Education*



**Dr. Seungbum Lee**

Professor  
Department of Management  
[sl65@uakron.edu](mailto:sl65@uakron.edu)

*Sport Business, e-Sports, and  
community outreach through  
sports*



**Dr. Nidaa Makki**

Professor  
LBJFF School of Education  
[nm32@uakron.edu](mailto:nm32@uakron.edu)

*Science & STEM Education, K-12  
Outreach, Youth Mentoring,  
Educational Equity*





**Maeve Marino, RPA**

Assistant Professor

Department of Anthropology

[mam377@uakron.edu](mailto:mam377@uakron.edu)

*Archaeology, Indigenous People,  
Historical Preservation,  
Public Archaeology*



**Dr. Timothy Matney**

Professor

Department of Anthropology

[matney@uakron.edu](mailto:matney@uakron.edu)

*Archaeology, Historic Preservation,  
Anthropology*



**Dr. Andrea Meluch**

Assistant Professor

School of Communication

[alm133@uakron.edu](mailto:alm133@uakron.edu)

*Health Disparities/Risks, Community  
Crises, Organizational Culture,  
Cancer Care, Health Promotion,  
Career Advancement*



**Dr. Chelsea Miller**

Assistant Professor

Department of Biology

[cmiller@uakron.edu](mailto:cmiller@uakron.edu)

*Sustainability, Conservation, Community  
Science, Data Gathering, Natural  
history*



**Dr. Randy Mitchell**

Professor

Department of Biology

[rjm2@uakron.edu](mailto:rjm2@uakron.edu)

*Ecology, Biology, Nature*



**Dr. Barry Mulholland**

MBA, CFP, ChFC

Director - Financial

Planning Program

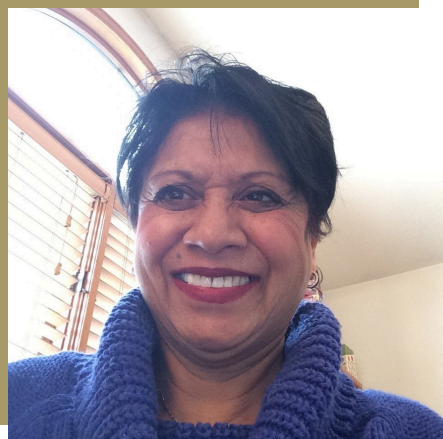
Associate Professor of Practice

- Department of Finance

[bmulholland@uakron.edu](mailto:bmulholland@uakron.edu)

*Financial Literacy/Coaching*

# OUR ACE SCHOLARS



**Dr. Jenny Naidu**

Senior Lecturer

LBJFF College of Education

[jnaidu@uakron.edu](mailto:jnaidu@uakron.edu)

*Teacher Education, Full Inclusion,  
Evaluation, Special Education*



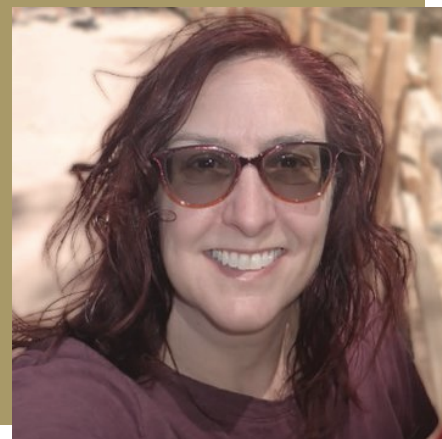
**Dr. B. Audrey Nguyen-  
Rudy**

Assistant Professor of Practice

Biomedical Engineering

[anguyen@uakron.edu](mailto:anguyen@uakron.edu)

*Biomedical Engineering, STEM,  
Outreach, Engagement, Active  
Learning*



**Dr. Stacey Nofziger**

Professor

Department of Sociology

[sn28@uakron.edu](mailto:sn28@uakron.edu)

*Community Health, Resilience,  
Victimization, Skill Development,  
Food Security, Environmentalism*



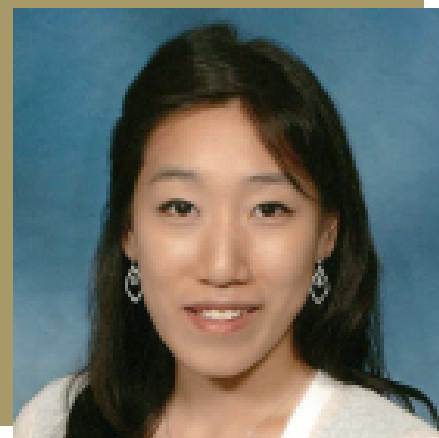
**Dr. Hillary Nunn**

Professor

Department of English

[nunn@uakron.edu](mailto:nunn@uakron.edu)

*Gender & Social Equity, Access to  
Arts, Information Literacy*



**Dr. Insun Park**

Assistant Professor

Department of Criminal Justice

Studies & Sociology

[ipark@uakron.edu](mailto:ipark@uakron.edu)

*Crime Prevention, Successful Reentry,  
Safety and Well-Being of  
Asian Americans*



**Dr. Robert L. Peralta**

Director - Center for Conflict

Management

Professor - Sociology

[rp32@uakron.edu](mailto:rp32@uakron.edu)

*Interpersonal & Intimate Partner  
Violence, Substance Use/Abuse,  
Returning Citizen Reintegration, Social  
Inequalities/Justice*





**Dr. Jeffrey L. Pellegrino, MPH**

Associate Professor  
Disaster Science &  
Emergency Services

[jpellegrino@uakron.edu](mailto:jpellegrino@uakron.edu)

*Resiliency, Emergency Preparedness,  
First Aid, Undergraduate Research,  
Public Health*



**Myrissa Powell, MSW, LISW**

Associate Lecturer  
School of Social Work  
& Family Sciences

[mab268@uakron.edu](mailto:mab268@uakron.edu)

*Health Equity, Sustainability, Access  
to Resources, Transportation,  
Reaching the Hard to Reach*



**Mark Rittenour, J.D.**

Business Communication  
Practitioner

College of Business - Dean's  
Office

[mrritten@uakron.edu](mailto:mrritten@uakron.edu)

*Legal Advocacy, Business & Its  
Diversification, Communication,  
Education, Socioeconomic Inequities,  
Civil Liberties*



**Dr. Lara Roketenetz**

Field Station Director  
Department of Biology

[ldr11@uakron.edu](mailto:ldr11@uakron.edu)

*Environmental/Outdoor Education,  
Place-Based & Problem-Based  
Learning, Biomimicry, Nature,  
Natural Resources*



**Dr. Christine Schneider**

Senior Lecturer  
Department of Sociology

[cshneider@uakron.edu](mailto:cshneider@uakron.edu)

*Disparities, Inequities, Food Access,  
Homelessness, Special Needs,  
Poverty, Gardening*



**Dr. Pamela Schulze**

Director -  
Center for Family Studies  
Professor - School of Social  
Work & Family Sciences

[schulze@uakron.edu](mailto:schulze@uakron.edu)

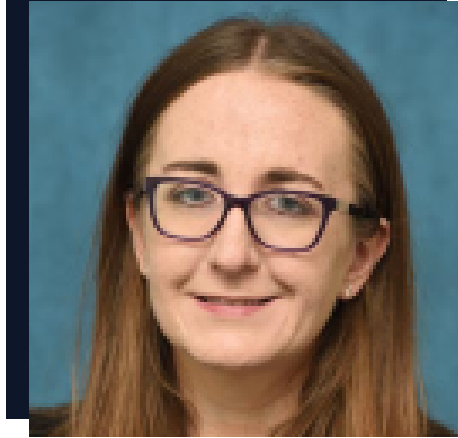
*Child Development, Parenting,  
Sustainability, Equity,  
Infant/Child Care*

# OUR ACE SCHOLARS



**Dr. Jennifer Stanley**

Professor & Chair  
Department of Psychology  
[jstanley@uakron.edu](mailto:jstanley@uakron.edu)  
Aging, Citizen Science



**Dr. Sarah St. George**

Assistant Professor of Practice  
Criminal Justice Studies  
[sstgeorge1@uakron.edu](mailto:sstgeorge1@uakron.edu)  
*Crime Analysis, Intelligence Analysis,  
National Security, Policing*



**Dr. J. Cherie Strachan**

Director - Ray C. Bliss Institute  
of Applied Politics  
Professor - Department of  
Political Science  
[jcw39@uakron.edu](mailto:jcw39@uakron.edu)  
*Civic Engagement, Youth Political  
Participation, Civility, Deliberation*



**Dr. Mary Triece**

Director - The Women's  
Studies Program  
Professor - School of  
Communication  
[mtriece@uakron.edu](mailto:mtriece@uakron.edu)

*Women and Girls, Health Disparities,  
Food Insecurity, Incarceration*



**Arnold Tunstall**

Director - University Galleries  
Myers School of Art  
Dept. Arts Administration  
[tarnold@uakron.edu](mailto:tarnold@uakron.edu)

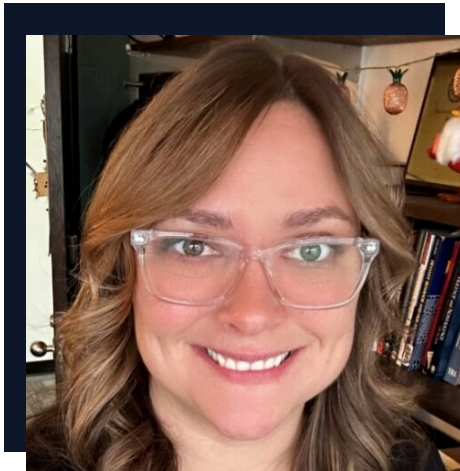
*Arts Advocacy, Placemaking, Arts &  
Culture, Equity*



**McKenna Vietmeier**

Associate Professor  
of Instruction  
Communication  
[mvietmeier@uakron.edu](mailto:mvietmeier@uakron.edu)  
*Internet Safety, Effective Digital  
Communication, Nonprofit  
Outreach, Experiential Learning*





**Dr. Lia Wiley**

Professor of Instruction  
Sociology

[lmc73@uakron.edu](mailto:lmc73@uakron.edu)

*Family Violence/Abuse, Drug and Alcohol Use and Misuse, Inside-Out Prison Exchange Program*



**Dr. Gregory Wilson**

Distinguished Professor  
Department of History

[gwilson@uakron.edu](mailto:gwilson@uakron.edu)

*History, Heritage, Preservation, Stewardship, Environment*



**Dr. Sheldon Wrice**

Chief Diversity Officer  
Office of Inclusion & Equity

Professor

[swrice1@uakron.edu](mailto:swrice1@uakron.edu)

*Higher Education, Literacy, Diversity, Equity*



**Dr. Matthew Wyszynski**

Sr. Associate Dean -

The Williams Honors College &

Professor - Department  
of Modern Languages

[wyszynski@uakron.edu](mailto:wyszynski@uakron.edu)

*Cross-Cultural Communication*



**Dr. Juan Xi**

Associate Professor  
Sociology

[jx@uakron.edu](mailto:jx@uakron.edu)

*Community Health and Wellbeing*



**Stephanie Yuhás, J.D.**

Professor of Practice  
Department of Criminal  
Justice Studies

[syuhás@uakron.edu](mailto:syuhás@uakron.edu)

*Off-Campus Safety, Housing, Crime, Crime analysis*

# OUR ACE

# SCHOLARS



**Dr. Baomei Zhao, CFLE**  
Professor

Department of Social Work  
& Family Sciences  
[bzhao1@uakron.edu](mailto:bzhao1@uakron.edu)  
Family/Child Development,  
Social Welfare Resources, Healthy  
Consumption, Homeless, Service Learning



**Dr. Julie Zhao**  
Assistant Dean

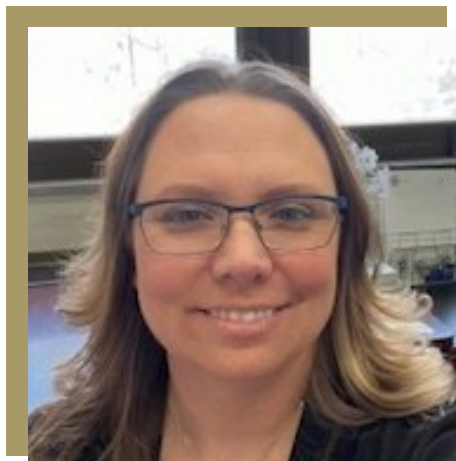
College of Engineering &  
Polymer Science  
[zhao1@uakron.edu](mailto:zhao1@uakron.edu)  
STEM Education, Strategic  
Planning, Partnership

## EMERGING ACE SCHOLARS



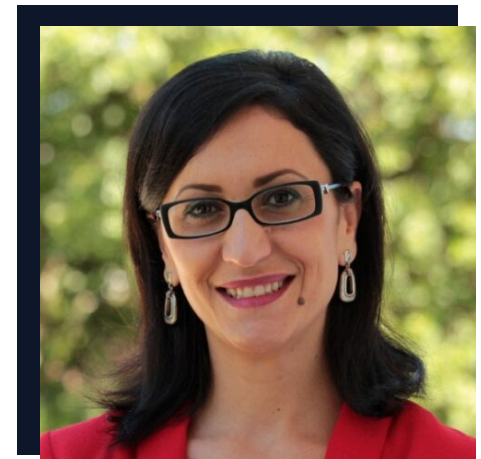
**Dr. Travis Hreno**

Associate Professor  
Philosophy  
[th34@uakron.edu](mailto:th34@uakron.edu)  
*Justice, Law, Human Rights,  
Equality, Democracy*



**Kimberly Hufgard**

Associate Professor of Instruction  
Department of Political Science  
[kjl9@uakron.edu](mailto:kjl9@uakron.edu)  
*Human Trafficking, Incarceration, Law  
Enforcement, Forensic Science,  
Investigations*



**Dr. Elena Popa**

Assistant Professor of  
Instruction  
Anthropology  
[epopa@uakron.edu](mailto:epopa@uakron.edu)  
*Migration, Displacement,  
Marginalization*





## DR. JOHN C. GREEN



John C. Green is Emeritus Director of the Ray C. Bliss Institute of Applied Politics.

Green received his Ph.D. in Political Science from Cornell University in 1983 and his B.A. in Economics from the University of Colorado in 1975. He is a member of Phi Beta Kappa.

Green joined the University of Akron in 1987, retired in 2020, and continues to work with his Bliss Institute colleagues. In addition to Bliss Institute director, he served as Chair, Department of Political Science; Dean, Buchtel College of Arts and Sciences; and Interim President of the University. He became a Distinguished Professor of Political Science in 2003 and was recognized as an Outstanding Faculty Member by the UA Board of Trustees in 1989 and 1994.

Green has published extensively on American political parties, elections, and religion and politics. In 2022, he received the Samuel Eldersveld Career Achievement Award from the Political Organizations and Parties Section of the American Political Science Association, and in 2023, the Lifetime Achievement Award from the Religion and Politics Section of the American Political Science Association. His most recent co-authored book, *Secular Surge* (Cambridge University Press, 2021) received the Distinguished Book Award, Society for the Scientific Study of Religion in 2022. He is perhaps best known as the editor of *The State of the Parties*, now in its seventh edition.

Dr. Green is a respected analyst of Ohio and American politics and has been often and widely quoted in the state, national, and international media.



## DR. BARRY MULHOLLAND

Barry S. Mulholland, Ph.D., MBA, CFP®, ChFC®, was the Director, Financial Planning Program and Associate Professor of Practice in the Department of Finance, College of Business at The University of Akron from 2016 to 2024. The program is registered with the CFP Board of Standards, the governing body for Certified Financial Planners®. He oversaw program development, financial planning industry relationships, assisted with student recruitment, and advised the industry-affiliated student organization. His teaching included personal finance, corporate finance, and financial planning courses.

Dr. Mulholland was the Founder of Diversitas: Expanding Diversity in Wealth Management ([www.diversitasfp.org](http://www.diversitasfp.org)), a national program that brings industry professionals together with career influencers and high school and university students to discuss why and how the wealth management industry and financial planning profession can become more inclusive. Diversitas partners with other universities with financial planning programs, many of which also do financial literacy work in their communities. Diversitas is becoming a platform for sharing ideas among Partner Universities. Barry continues to be recognized nationally for his work to expand diversity in the industry, having won several national awards.



Dr. Mulholland led efforts to improve financial literacy in Akron and Northeast Ohio through workshops that engaged financial planners in the community to teach basic financial literacy and provide free advice. He helped financial planning students create an on-campus financial literacy experience for high school students. He served for six years on the Advisory Board of the H.K. Barker Center for Economic Education in the LeBron James Family Foundation School of Education.

Dr. Mulholland set the vision for the RooMoney program, a university student peer counseling program designed to teach financial literacy and provide basic peer financial counseling to University of Akron students. RooMoney is a joint effort of the Financial Planning Program and ZipAssist.

In his academic work, his research included explorations of the impact of financial literacy education on student understanding, the use of financial planning technology, life insurance consumer behavior, and the impact of diversity programs on participant perceptions.

Barry greatly appreciates being recognized as an ACE Scholar in its inaugural year. It is truly an honor to be recognized among such involved individuals.



## DR. DEBORAH OWENS

Dr. Deborah “Deb” Owens is presently serving in her last year as Chair, Marketing, a position she has held for the last 6 years. As chair she oversees faculty and students in the Marketing, Sales Management, and International Business departments including all majors, minors and certificate programs. Dr. Owens joined The University of Akron in 1995, teaching undergraduate and graduate courses in marketing for the past 29 years.

She has always had a passion for supporting the Akron Community, which she has always called home.

Debbie has helped to champion experiential learning in many forms. Dr. Owens supported the curriculum change that all Marketing and Sales majors be required to have an internship for credit. Through this effort both companies and students have benefited. Companies get access to young talent and students gain additional skills and experiences, with many obtaining full time job offers upon graduation.

Dr. Owens assisted in establishing the senior Marketing and Sales Capstone class in which students assist local firms and non-profits by providing recommendations supported by research. Dr. Owens clients in her undergraduate and graduate classes have ranged from small start-ups to Fortune 500 firms. Debbie has led over 30 student projects. Sample organizations include Faithful Servants Free Clinic, and entrepreneurial firms such as Hartville Potato Chips, Summit E-Waste, and Akron Honey. She has also coordinated projects with larger firms such as The Goodyear Tire and Rubber Company, Country Pure Foods, and Freshmark/Sugardale.

As an educator, she has been recognized for her teaching and service excellence by the College of Business, and as the recipient of the University Outstanding Mentor Award (2018). Dr. Owens was surprised this year by the Marketing Class of 2024 honoring her with a “Lifetime Achievement Award” at their Senior Banquet.



Dr. Owens interests have centered on education, particularly serving first generation and urban students, and providing students experiential learning opportunities, where students can apply their knowledge while learning additional professional skills.

Dr. Owens has held numerous leadership positions in the community. She presently serves on the Board of Directors for Cuyahoga Christian Academy (CVCA). Previously she served in many other leadership capacities including Project GRAD Akron (2008-2011); Founder Project Grad Summer Business Bootcamp (2008-2016); and State Board of Education of Ohio, Representative for 7th District (1999-2006).

Prior to her academic career she worked in the health care sector in management positions at Children's Hospital Medical Center of Akron. At Children's Dr. Owens served as Assistant Director, Nursing Administration from 1989 to 1993, and as the Management Engineer from 1980 to 1989.

Dr. Owens appreciates the work of the EX[L] Center as a catalyst for entrepreneurship, collaboration, and experiential learning, and was glad to be involved in its early launch.

Debbie is so grateful for the opportunities she has had to work with inspiring students and motivated faculty, who she knows will maintain the life changing tradition of learning by doing.

# LIFETIME ACE SCHOLARS



**Dr. Carolyn Behrman**

Professor Emeritus,  
Anthropology  
Past EX[L] Co-Director



**Dr. Parizad Dejbord**

Professor Emeritus,  
Modern Languages



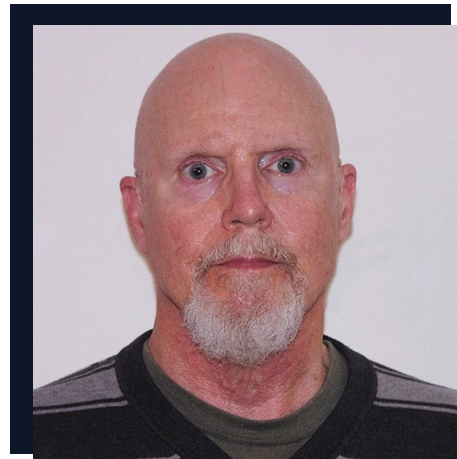
**Dr. Kathryn Feltey**

Professor Emeritus,  
Sociology



**Dr. Matthew Lee**

Past Professor,  
Sociology



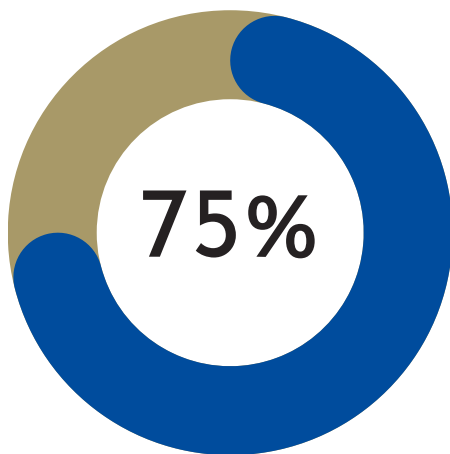
**Dr. Richard Steiner**

Professor Emeritus,  
Statistics



**Anoo Vyas, J.D.**

Visiting Professor,  
School of Law,  
Past EX[L] Co-Director,



## DID YOU KNOW?

Of 48 academic units at The University of Akron, **more than half** have at least one ACE Scholar (36/48) and **every College** is represented. Our cohort includes part-time instructors, non-tenure and tenure-track faculty, staff & contract professionals, and university administrators.

# GET IN TOUCH



All of UA's ACE Scholars have consented to sharing their interests and contact information. Feel free to reach out to them directly, or you can contact [Dr. Christin Seher](#) to facilitate an introduction at:

## THE EX[L] CENTER FOR COMMUNITY ENGAGED LEARNING



EMAIL  
[exl@uakron.edu](mailto:exl@uakron.edu)



WEBSITE  
[www.uakron.edu/exl](http://www.uakron.edu/exl)



INSTAGRAM  
[@uakronexlcenter](https://www.instagram.com/uakronexlcenter)



LINKEDIN  
[@uakronexlcenter](https://www.linkedin.com/company/uakronexlcenter)